

Relação do aço

V1V2V3

V4V5V6

V7V8

AÇO	N	DIAM (mm)	QUANT (Barras)	UNIT (cm)	C.TOTAL (cm)
CA60	1	5.0	65	60	3900
CA50	2	8.0	16	111	1776
	3	8.0	16	141	2256

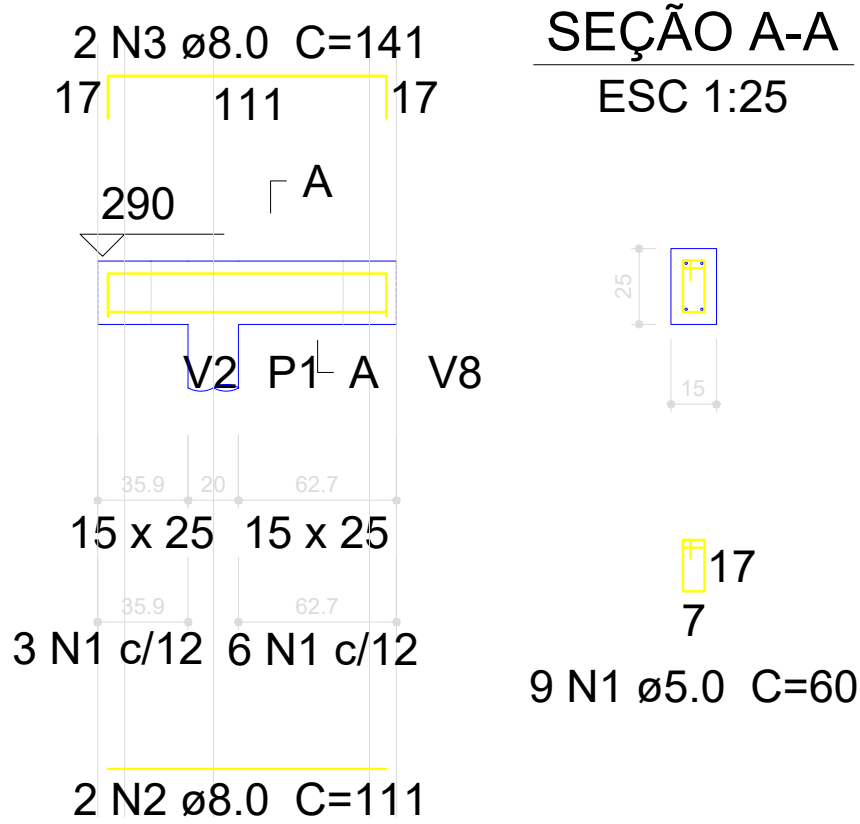
Resumo do aço

AÇO	DIAM (mm)	C.TOTAL (m)	PESO + 10 % (kg)
CA50	8.0	40.4	17.5
CA60	5.0	39	6.6
PESO TOTAL (kg)			
CA50	17.5		
CA60	6.6		

Volume de concreto (C-30) = 0.36 m³
Área de forma = 6.17 m²

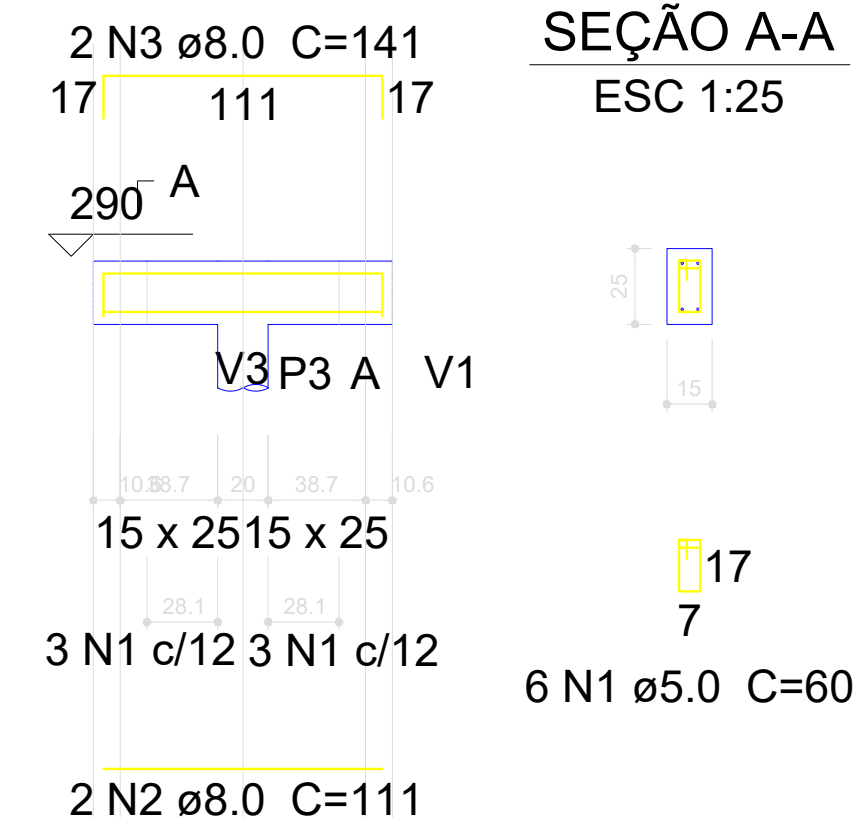
V1

ESC 1:30



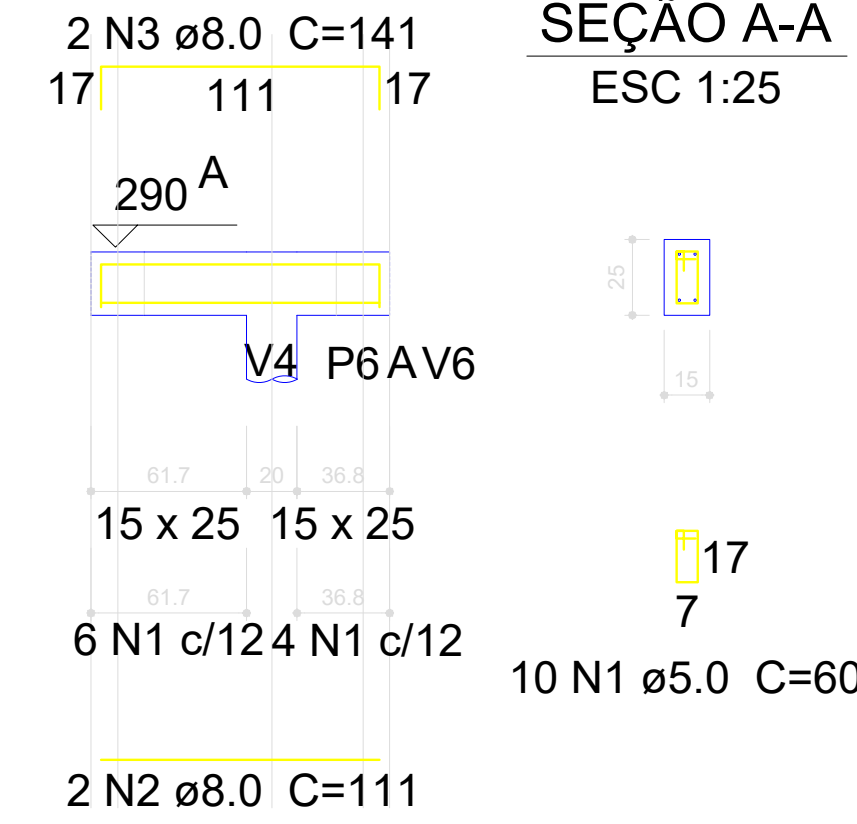
V2

ESC 1:30



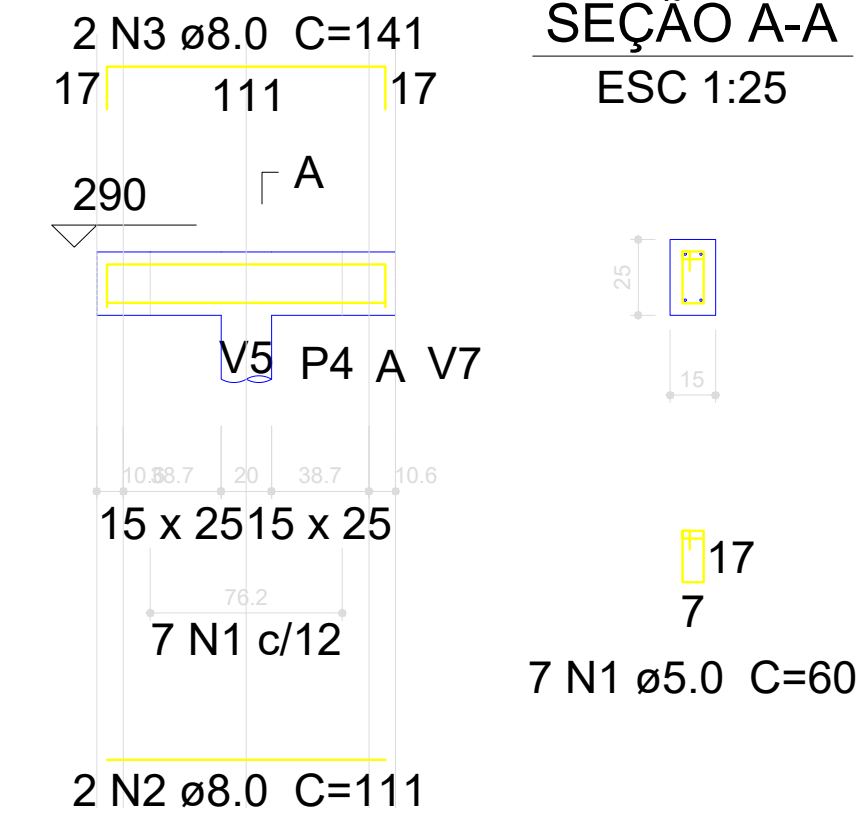
V5

ESC 1:30



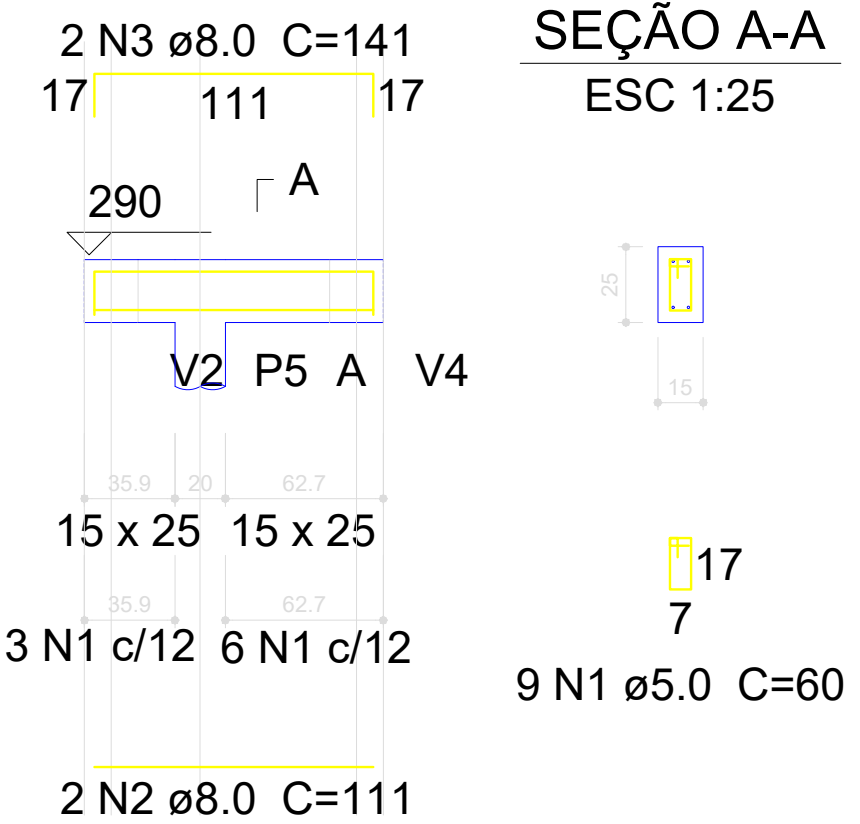
V6

ESC 1:30



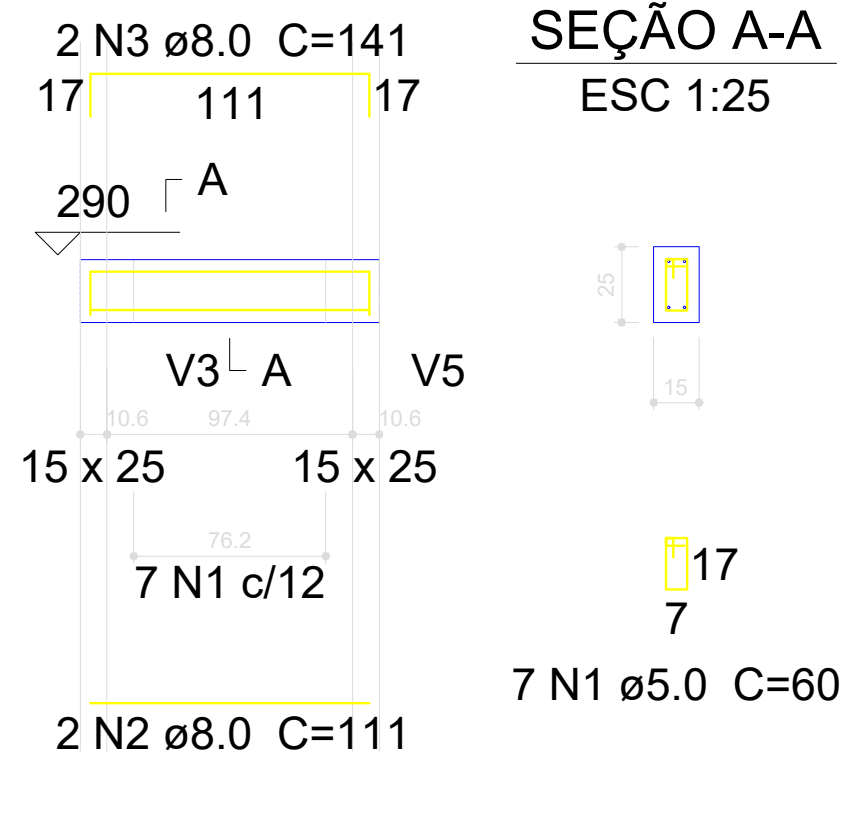
V3

ESC 1:30



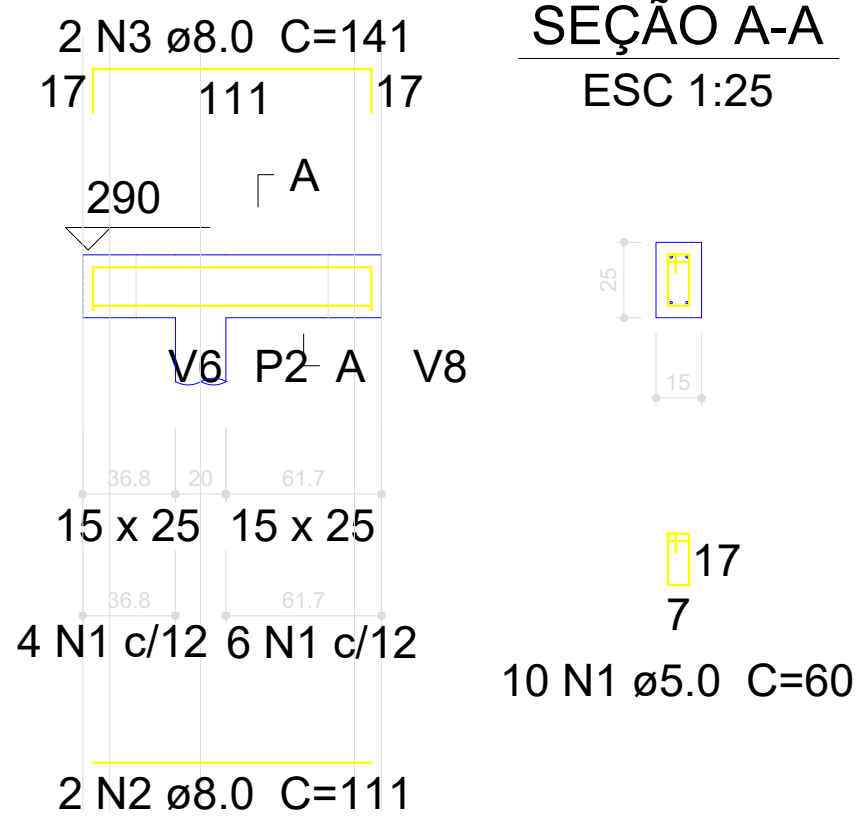
V4

ESC 1:30



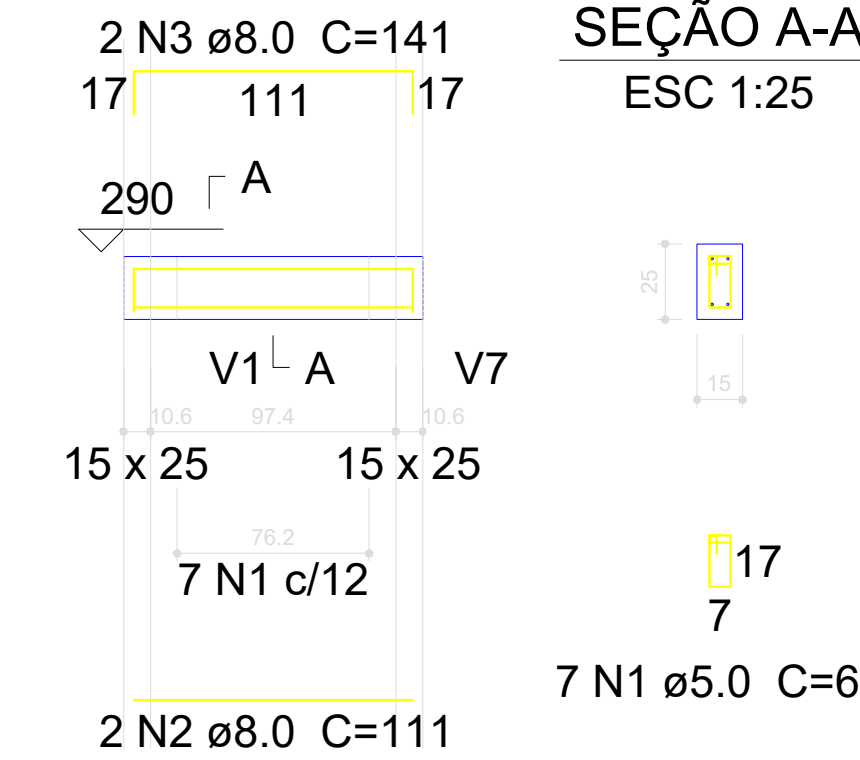
V7

ESC 1:30



V8

ESC 1:30



PM de São Vicente do Sul
Secret Munic de Planejamento
APROVADO
Em 25/07/19



Prefeitura Municipal
São Vicente do Sul
2017 - 2020
Município desenvolvido, cidadão valorizado

PROJETO:
PÓRTICO TURÍSTICO SÃO VICENTE DO SUL

LOCAL:
RUA GAL JOÃO ANTONIO

PLANTA:
VIGAS

PRANCHA:
ARMADURA DE VIGAS

RESPONSÁVEL TÉCNICO:
Andrews Leivicoff
Andrews Leivicoff CREA/RS 206829

DATA:
18/07/19

ESCALA:
INDICADA

ÁREA:
243.43m²

PRANCHA Nº:
1/1